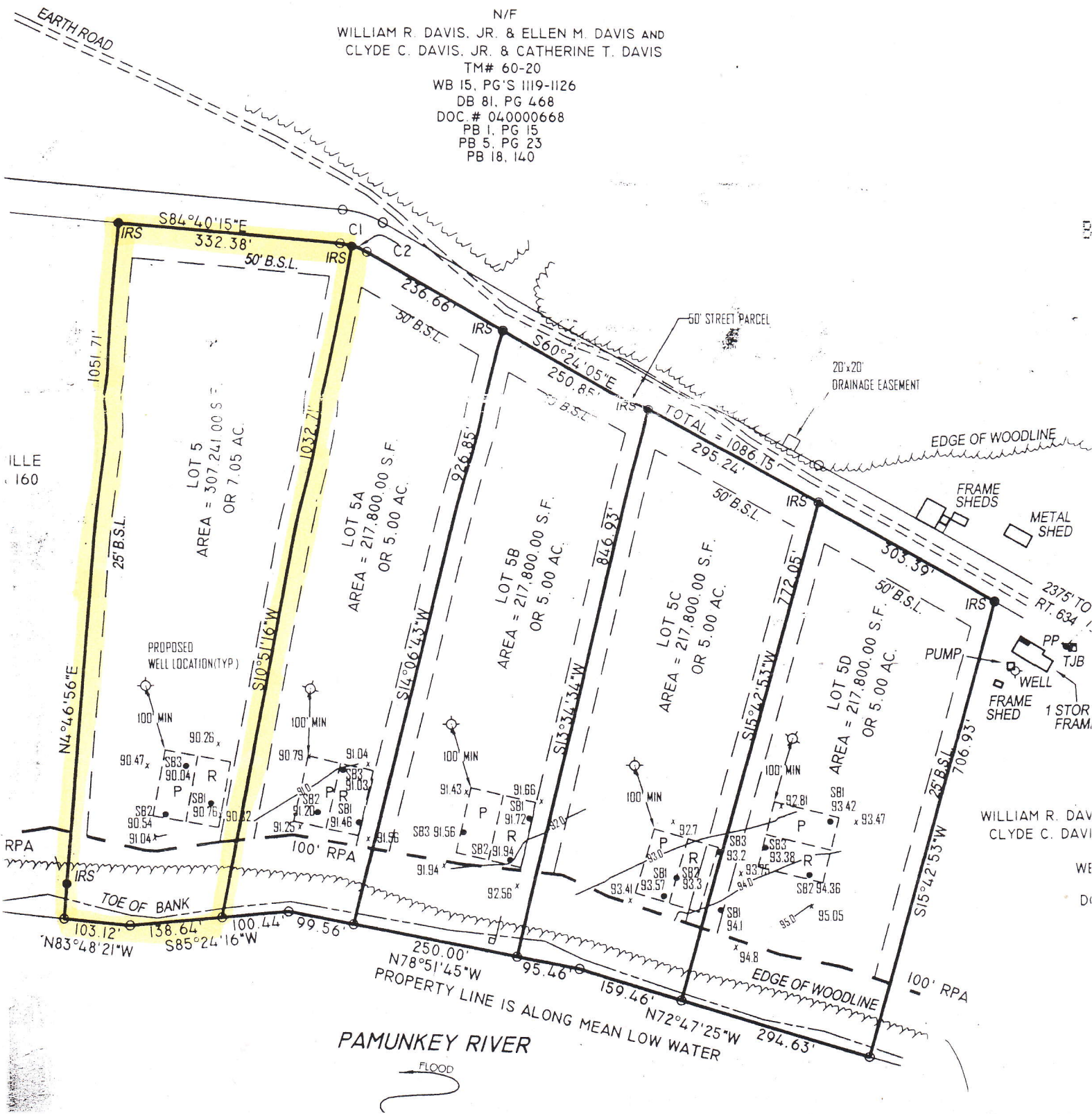


RECEIVED
JUN 24 2004

BY: *ERS*

N/F
WILLIAM R. DAVIS, JR. & ELLEN M. DAVIS AND
CLYDE C. DAVIS, JR. & CATHERINE T. DAVIS
TM# 60-20
WB 15, PG'S 1119-1126
DB 81, PG 468
DOC # 040000668
PB 1, PG 15
PB 5, PG 23
PB 18, 140



ILLE
160

WILLIAM R. DAV
CLYDE C. DAVI
WE
DI